

Bridge Over Troubled Water

For SATB and Blackwood Clarinets

Bass

Paul Simon

arr. Clyde Sechler/Kate Brown

Moderato $\text{♩} = 80$
7

A



When're wea - ry, feel in' small,



I'm on your side, oh, when times get rough and I just



can't be found - like a bridge o-ver troubled water I will lay me down. Like a



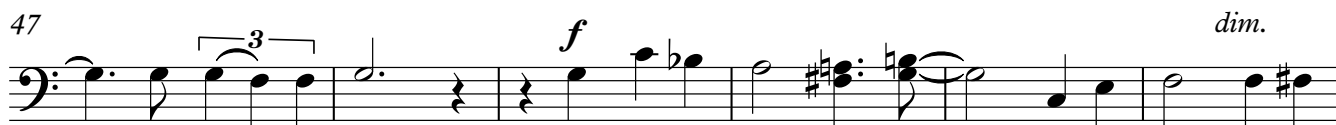
bridge o-ver troubled water I will lay me down. When're



down and out, when you're on the street, when eve-ning falls so hard.



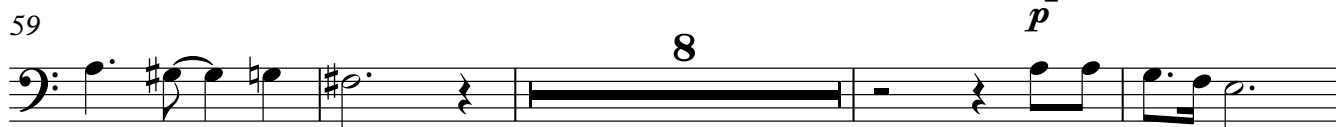
I will com-fort you. I'll take your part, oh,



when dark-ness comes and pain is all a-round, like a bridge o-ver



troubled water I will lay me down, Like a bridge o-ver troubled water I will lay me



down. Sail on sil-veg-irl



sail on by. You time has come to shine, all your dreams on the way.

2 78

pp

Bass

f



See how they shine. — Oh, — if you need a friend I'm sailing right behind,

84

ff



— like a bridge o-ver troubled water I will ease your mind. Like a bridge o-ver

90



trou - bled wa - ter I will ease your mind, _____

93



— your mind. _____